

## **Nearshoring, global value chains' structure and volatility**

**Filippo Bontadini, Valentina Meliciani, Maria Savona and Ariel Wirkierman**

This paper puts forward novel evidence on the role of global value chains (GVCs) in propagating supply-side shocks across the world economy. We tackle two specific issues: first we focus on whether integration in the global economy is conducive to higher growth of final output and, second, we study the relationship between final output growth and GVCs structural features. Drawing on the GVC literature, we consider three GVC measures: the share of foreign value added a GVC sources from outside its region of completion, the length, and the concentration of the GVC. We then compute supply-side shocks based on producer price index volatility and exploit these to study how they propagate along GVCs. We find that integration with foreign inputs is associated to faster final output growth and resilience to supply-side shocks. Concerning the structure of GVCs, we find that longer GVCs tend on the one hand to grow at a slower rate, but they are also more resilient to supply side shocks. We discuss these findings in light of the on-going debate around Europe strategic autonomy.

## 1. Introduction

Over the past few years, the debate on GVCs and their role in economic growth has gained significant traction with the emergence of more nuanced views. Traditionally, GVCs have been regarded as a driver of economic growth, providing countries with access to larger markets, enhancing the international division of labour and efficiency gains, as well as providing countries with access to frontier technology (Baldwin, 2013; Taglioni and Winkler, 2016). However, it has also become clear that such benefits are far from automatic, as they depend on the position countries occupy within GVCs (Simonazzi et al., 2013; Altzinger and Landesmann, 2008), and on the fact that productivity gains do not always translate into employment and economic upgrading (Pahl and Timmer 2019; Bramucci et al. 2021; Bontadini et al., 2021).

This more nuanced view of GVCs and their economic implications has emerged at the same time that economic integration and globalisation has slowed down, losing steam since the great trade collapse during the financial crisis, bringing the future of GVCs into question. More recently, the COVID-19 pandemic and the war in Ukraine have laid bare key dependences of production systems vis-à-vis foreign suppliers and raised questions concerning international fragmentation, its structure, and the propagation of shocks.

A trade-off has taken place, in the policy debate, between economic efficiency and economic security (Baldwin and Evenett 2020). This is reflected in the Inflation Reduction Act in the US, the emerging idea of “open strategic autonomy” in Europe and the growing tensions around the supply of key materials for the green and digital transitions.

As a result, GVCs’ role within the global economy has come into question on two accounts. First, the intensity, i.e. whether the degree of participation in GVCs is linked to higher exposure to shocks. When considering GVC integration, policy makers are faced with a choice between exposure to global shocks and exposure to local shocks (Borin et al. 2021). For example, on the one hand, the implementation of very strict measures to contain the spread of the pandemic across the world has brought production processes that heavily relied on foreign inputs to a halt. On the other hand, GVC participation allows firms to access a broader

supplier base, making relationship-specific investments that improve resilience to local shocks (Miroudot 2020).

Second, the debate on GVCs has also focused on changes in the *structure*, rather than the *intensity*, of GVC participation. The recent disruption of international trade flows has drawn attention to the need to diversify and shorten production chains (Javorcik 2020, Bontadini et al. 2022). In the current, more turbulent, economic context it has become relevant to consider what changes GVCs should undergo in order to ensure economic production. Specifically, the notion of nearshoring has drawn significant attention in the policy debate to the future of GVCs.

It remains, however, unclear what structural features of GVCs are important in this debate as nearshoring, shortening, and concentration are hard to distinguish from one another. The most intuitive interpretation of nearshoring would be to bring production stages closer to final demand (Bontadini et al. 2022). Shortening of GVCs implies a reduction of the degree of fragmentation and a reduction of the number of intermediate stages. The idea of diversification focuses on reducing the concentration of suppliers.

Literature on international business has devoted significant attention to the issues of reshoring, backshoring and nearshoring, providing qualitative evidence and a discussion of the firm level drivers (Piantanesi and Arauzo-Carod, 2019, Barbieri et al., 2020, Pietrobelli and Seri 2023). However, there is currently no systematic quantitative evidence exploring how different GVC structural features and production are related to each other. We set out to remedy this not only by studying the association between GVC final output growth and their structure, but also by focusing on the propagation of supply shocks. We ask, specifically, two interrelated key questions. First, we assess whether GVC participation increases exposure to shocks, hampering GVC output. Second, we study whether GVC structural features, such as nearshoring, length and concentration, mediate supply shocks and their relationship with GVC output growth.

To achieve this, we use the latest inter-country input-output (ICIO) tables, compiled in 2021 by the OECD. Our unit of analysis are GVCs across countries, i.e. a vertically integrated sub-

system (Pasinetti 1973), and we identify GVCs by their country of completion, in line with the methodology developed by Los et al. (2015). For illustrative purposes, we consider as German automotive GVC the production of cars reaching completion in Germany and all the intermediate inputs that contribute to it, regardless of the industry and country of origin.

We then compute real output growth for each GVC in each country of completion and calculate measures of GVC integration and its structure. Concerning the latter, we focus in particular on measures of (i) farshoring, following Los et al. (2015), (ii) GVC length as in Antràs et al. (2018) and (iii) GVC concentration (Jimenez et al. 2022). We combine ICIO data with the World Bank global database on inflation (Ha et al. 2023) to compute price volatility for each GVC, which we use to study the interaction of supply side price shocks with GVC participation and its structure.

Our results suggest that GVCs that are more domestic, i.e. production processes sourcing little value added from abroad, see slower real output growth and have a stronger negative association with supply shocks. Among the structural features of GVCs we find more heterogenous results. The length, i.e. the degree of fragmentation of production, is associated with slower growth in GVC's real output but at the same time seems to attenuate the negative relationship between supply shocks and real GVC output growth. These results offer novel evidence and contribute to a nuanced understanding of how GVC integration and its structure relates to output growth and the propagation of shocks. We discuss these results in the context of the revived interest in industrial policy and strategic autonomy in Europe.

The remainder of the paper is organised as follows. The next section selectively reviews the relevant streams of literature and frames our contribution accordingly. Section 2 discusses in detail the data, our measurement approach and the econometric setup. Section 3 presents the results and the last section concludes the paper.

## **2. Relevant literature and contribution**

Literature has highlighted how shocks can propagate through production networks, leading to significant changes in output at the aggregate level. Intuition suggests that small shocks at

the industry level would even out and dissipate at the aggregate level. However, Gabaix (2011) has shown that the asymmetric distribution of inter-sectoral linkages (few large firms dominate key sectors) can propagate shocks across the economy, leading to macroeconomic volatility. In line with this, there is now a growing body of literature that has bridged general equilibrium models and the insights from network theory, highlighting how network effects emanating from inter-sectoral and inter-firm linkages can help explain how fluctuation shocks lead to aggregate volatility (Carvalho 2008, Acemoglu et al, 2016, Carvalho and Tahbaz-Salehi, 2019, Baqaee and Farhi, 2019, 2020).

The key takeaway from this literature is that when input-output production networks exhibit high disparity in the centrality of suppliers, i.e. when there are key suppliers on which many industries depend, shocks can propagate far and wide along the network, leading to significant aggregate fluctuations.

This has provided theoretical understanding of the role of production networks in explaining aggregate changes in production. Broad literature is currently studying how natural disasters propagate through firm level input-output networks (Carvalho et al., 2021, Boehm et al., 2019). At the macro level, Acemoglu et al. (2016) were the first to put forward a model explaining the mechanisms behind upstream and downstream shocks, coupled with empirical evidence for the US economy. In this framework, shocks propagate through the production network, captured with the Leontieff inverse in line with standard input-output analysis. They show that in an input-output framework, supply-side shocks propagate downstream, while demand-side shocks do so upstream.

The literature has not only established the importance of input-output linkages in acting as channels for the propagation of shocks, both in terms of output (Carvalho and Tahbaz-Salehi, 2019, Baqaee and Farhi, 2019, 2020) and price fluctuations (Auer et al. 2019). More recently, Joya and Rougier (2019) showed that specific features of the production network mediate the propagation of the shock. They found that country-industries located in very dense parts of their network tend to diffuse the shocks by fading it out across multiple paths, while very influential nodes trigger a stronger contagion effect, increasing aggregate volatility.

These studies focus on output fluctuations at the country level that are driven by industry-level shocks. However, there is scarce empirical evidence on how shocks in a given country-industry propagate through vertically integrated sectors leading to fluctuations in the production of final goods – i.e. through GVCs.

The literature looking specifically at GVCs has developed significantly in the past few years, putting forward a range of measures of GVC participation of countries and industries. Baldwin et al. 2022 systematise the wide array of measures that have been put forward in the literature since the seminal contributions of Koopman et al (2014) and Johnson and Noguera (2012). The well-established measures of backward and forward GVC participation look at how deeply inserted a country-industry is within GVCs and the most recent literature on GVCs has used them as proxies of dependence vis-à-vis foreign partners (Johnson and Noguera 2017, Baldwin and Freeman 2021, Schwellnuss et al. 2022).

This strand of work has so far focused especially on measures capturing the intensity of GVC participation at the country-industry level, framing these around the trade-off between exposure to foreign shocks and access to a diversified pool of suppliers (Borin et al. 2021, Di Giovanni and Levchenko, 2009). There are, however, also measures that look at the structure of GVCs, taking the vertically integrated subsystem as unit of analysis. Los et al. (2015) study the geographical distribution of value added sourcing along GVCs, while measures of upstreamness and downstreamness have also been developed (Antràs et al. 2012, 2018). The latter is particularly relevant as it has been used in the literature as a measure of the length of GVCs (Johnson, 2018).

Despite this wide array of measures, there is a dearth of empirical evidence on how shocks propagate along GVCs and, more importantly, how they interact with the structure of GVCs. We aim here to bring together the theoretical insights from the literature: the general equilibrium literature usually takes the production network as given, the literature on GVC measurement provides us with useful tools to characterise the network, in order to study how the intensity and the structure of GVC integration mediate the propagation of supply-side shocks. We set out our framework and methodological approach in the following section.

### 3. Framework and methodological approach

#### 3.A Shocks along the value chain

Acemoglu et al (2016) set out a conceptual framework that discusses the importance of input-output networks in propagating production shocks, similarly to what Auer et al. (2019) argue concerning price comovements. The core intuition of these models is that the impact of a shock in industry  $j$  on industry  $i$  is mediated by the importance of industry  $j$  in the output of industry  $i$ . In the case of supply shocks, they show that propagation takes place downstream. This means that when an industry experiences a negative shock, this will be passed on to its customers, who will in turn pass it down to their customers and so forth. The extent to which the shock propagates depends on how reliant the customers are on the industry that has experienced the shock.

The network of inter-sectoral linkages that propagates shocks has usually been depicted with input-output models, where production is given by:

$$X = (I - A)^{-1} * F = B * F \quad (1)$$

Where  $X$  is the total output column vector of each country-industry, i.e. including both production of intermediate and final goods;  $F$  is a vector of production of final goods (e.g. German cars or French bottles of wine, but not German wheels and French grapes).  $B$  is the Leontieff inverse that tells us for each dollar of final goods how much intermediate production is necessary.

Two remarks are in order here. First, while most of the literature has used the Leontief Inverse to study propagation of shocks across countries and industries, the coefficients of the  $B$  matrix connect the production of final products ( $F$ ) with the sourcing of intermediate goods. When considering interactions among multiple countries and sectors, the Leontief Inverse matrix can be used to look at entire value chains, i.e. the vertically integrated network of inter-sectoral linkage that leads to the completion of a given final good in a given country.

Second, the Leontieff inverse presents some additional features that are useful for our purpose. It is in fact a square matrix that can be interpreted as an adjacency matrix depicting a directed and weighted production network, taking the example of three countries  $a$ ,  $b$ , and  $c$ :

$$(I - A)^{-1} = B = \begin{pmatrix} b_{aa} & b_{ab} & b_{ac} \\ b_{ba} & b_{bb} & b_{bc} \\ b_{ca} & b_{cb} & b_{cc} \end{pmatrix} \quad (2)$$

Each *column* in this matrix represents a value chain and the distribution of the values of each  $b_{ij}$  can be used to capture the structure of the GVC. Note that equation 2 is populated by coefficients. To look at production values, we can pre-multiply the Leontieff inverse by a diagonalised vector of value added shares and post-multiply it by a diagonalised vector of production of final goods ( $F'$ ), i.e.  $V'BF'$ :

$$\begin{pmatrix} v_a & 0 & 0 \\ 0 & v_b & 0 \\ 0 & 0 & v_c \end{pmatrix} * \begin{pmatrix} b_{aa} & b_{ab} & b_{ac} \\ b_{ba} & b_{bb} & b_{bc} \\ b_{ca} & b_{cb} & b_{cc} \end{pmatrix} * \begin{pmatrix} f_a & 0 & 0 \\ 0 & f_b & 0 \\ 0 & 0 & f_c \end{pmatrix} = \begin{pmatrix} v_a b_{aa} f_a & v_a b_{ab} f_b & v_a b_{ac} f_c \\ v_b b_{ba} f_a & v_b b_{bb} f_b & v_b b_{bc} f_c \\ v_c b_{ca} f_a & v_c b_{cb} f_b & v_c b_{cc} f_c \end{pmatrix} \quad (3)$$

The matrix in equation 3 is populated by the output contributions of each country-industry (in the rows) to each value chains (in the columns). The column sum of the matrix above provides us with the total output of each GVC identified by the country of completion, i.e. German cars and their components irrespective of the country of production. It follows that total output of a GVC can be broken down into a final product component (F) identifying the last round of production (e.g. the assembly of a car) and a structural component (B) that captures the distribution of intermediate contributions of all other country-industries engaged in the GVC.

Our core contention is that the structure of GVCs is important for the growth of GVCs' output and for mediating the propagation of supply shocks. Acemoglu et al. (2016) focus on the US economy and study shocks deriving from import from China, government spending, TFP increases or patent production. We take a different approach here and look at volatility in suppliers' prices. Generally speaking, spikes in prices can be related to negative shocks in



supply (Carvalho and Tahbaz-Salehi, 2019), and volatility of price of inputs has become particularly important in the last few years because of growing trade disruptions. Naturally, increases in producers' prices, to the extent that they capture reductions in provision of inputs to a GVC, may be connected to reduction in the GVC output almost mechanically. We therefore focus on the volatility of prices, using the World Bank global database on inflation (Ha et al. 2023). The database reports producer price indexes (PPIs) for a large sample of countries on a monthly basis. For each year and country, we therefore compute the standard deviation of the monthly PPIs in a given year, capturing supply shocks generated by price instability.

The next step is to compute an index that will capture how such volatility in PPIs propagates through GVC suppliers. To do this we use an approach similar to Joya and Rougier (2019) and consider that the shock a GVC experiences is a weighted average of the PPI volatility of each country participating in the GVC, which in more formal terms:

$$S_{j,t} = \sum_i w_{ij,t} * Sppi_{i,t} \quad (5)$$

Where  $Sppi_{i,t}$  is the standard deviation of PPIs in country  $i$  at time  $t$  and the weight  $w_{ij,t}$  is built using Leontief coefficients. Recall that each GVC is represented as a column of the Leontief inverse and is a vector of coefficients that tell us how much each country and industry contribute to it. We therefore aggregate the Leontieff inverse by country  $i$  across all its industries  $k$  that contribute to GVC  $j$ , obtaining  $b_{ij,t} = \sum_k b_{ijk,t}$ , which we then combine to compute country-level weight  $w_{ij,t} = b_{ij,t} / \sum_j b_{ij,t}$ . Note that the numerator here is the length of the GVC; however, this is not mechanically related to the weights.

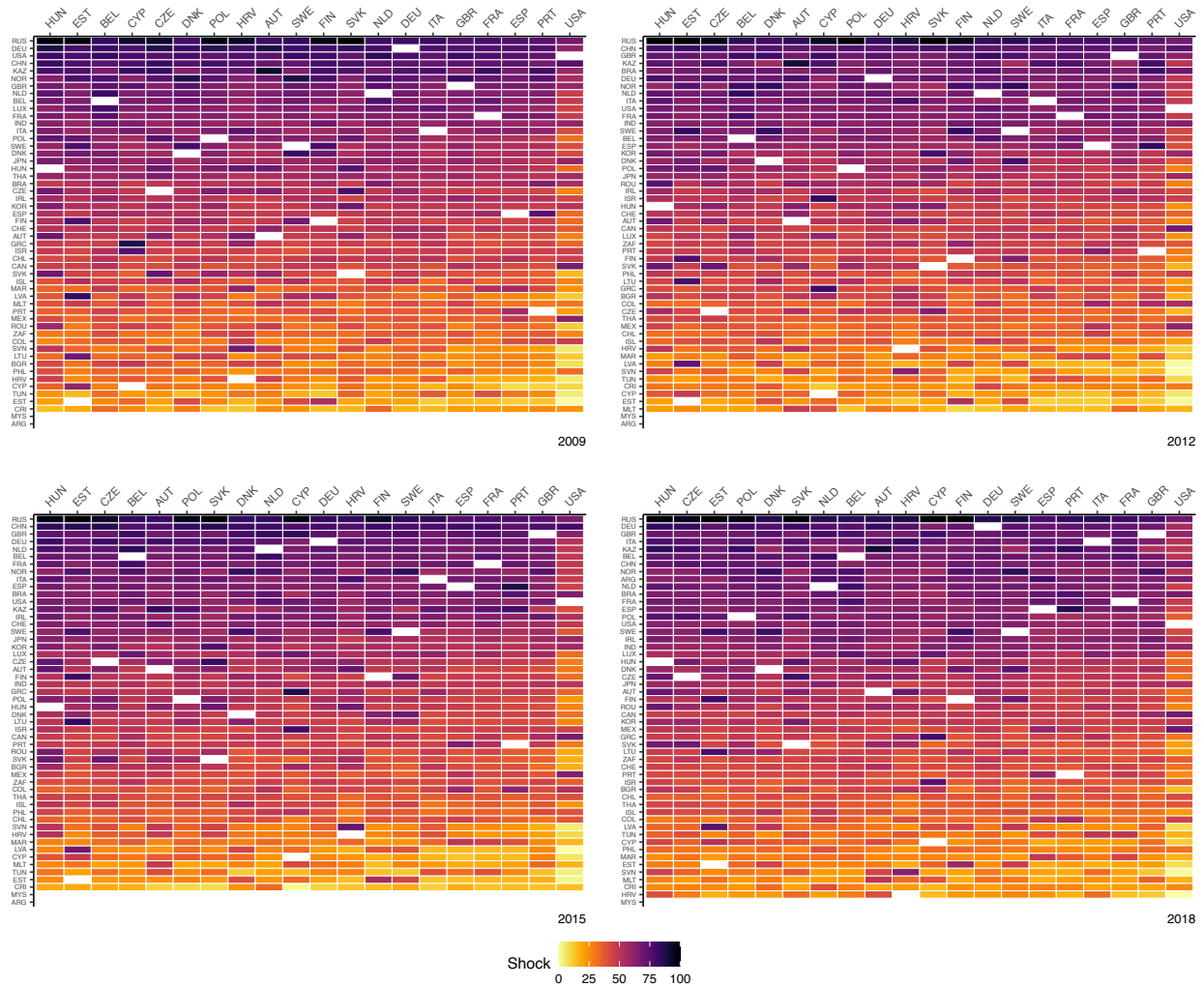
To illustrate how our measure captures price instability along the supply chain, we report in Figure 1 the shocks along GVCs. Each matrix in the figure reports countries in which price instability occurs in the rows and GVCs in the columns. To improve readability, GVCs have been aggregated at the country level, using GV reciprocal Cs' final output as weights and we

focus our analysis on a subset of 19 EU countries<sup>1</sup> and the US. The shock has also been bound between 0 and 100, so the darker the colour in the cell, the stronger the price instability the country in the row has propagated to the GVCs on the column. We find Russia to be a major source of price instability, affecting mostly Eastern European countries that have closer and greater links with Russia. As expected, price instability propagates the most when originating in large economies such as China, Germany, the UK and the US. The figure also shows that the US economy, and to a lesser extent the UK, is more insulated from foreign price instability, which reflects the much larger reciprocal integration of EU economies (Bontadini et al. 2022).

---

<sup>1</sup> We have excluded from our sample Bulgaria, Latvia and Romania because they present very large variations in both ICIO and World Bank global database data. We are left with Austria, Belgium, Cyprus, Czechia, Germany, Denmark, Spain, Estonia, Finland, France, UK, Croatia, Hungary, Italy, the Netherlands, Poland, Portugal, Slovakia, and Sweden.

Figure 1 – Supply price shocks across EU countries and US



Source: ICIO data and World Bank global database on inflation. Each matrix is populated with the log of the supply-side shock as computed in equation 5, bound between 0 and 100. Rows and columns are ordered using the average size of the shock they supply or receive, respectively. Tiles connecting a country with itself or for which no price data is available are left blank.

### 3.B Measuring GVC participation and nearshoring

Our interest concerning shock propagation along GVCs is twofold. On the one hand, we want to assess the relationship between GVC participation and GVC output growth; on the other hand, we want to explore how shocks propagate through the GVC structure and whether different configurations of GVC have a different impact in the propagation of the shocks.

To capture the former, we resort to a standard measure in the literature on GVC (Los et al. 2015), i.e. the domestic value added share. This means that for each GVC we compute the share of value added in total final production that is provided by the country of completion. As an illustration, in equation 3 the DVAS for country  $a$  is equal to:

$$DVAS_a = \frac{v_a b_{aa} f_a}{(v_a b_{aa} f_a + v_b b_{ba} f_a + v_c b_{ca} f_a)} \quad (4)$$

Concerning the structure of the inter-sectoral production network, we have discussed that the literature has highlighted that the Leontieff index captures how shocks propagate across the economy and that structural features of the network of inter-sectoral linkages can mediate the propagation of shocks (Rougier and Joya, 2019).

Focusing on GVCs specifically, we build on this and link it with measures of GVC structure and length developed in the literature. We rely on three measures that are consistent with different definitions of nearshoring since, despite the growing interest in the idea of nearshoring, there is little clarity on what this means exactly.

The most intuitive way of thinking about this concept is from a geographical point of view. Nearshoring implies bringing GVCs closer to their final market. If, however, nearshoring is supposed to be an antidote to exposure to volatility from foreign suppliers, it is important to note that this may not necessarily come from the geographical location of production per se.

Rather, there may be other features of the structure of GVCs at play. First, production may in fact locate geographically closer to its final demand, but still be highly fragmented across countries and sectors retaining high levels of exposure to external shocks. Second, production in a GVC may still be highly concentrated in few key suppliers, regardless of their geographical location. Should these main suppliers suffer external shocks, production downstream might grind to a halt, leading to contagion effects (Joya and Rougier, 2019).

There are, therefore, different facets to the idea of nearshoring that cannot be easily captured with a single indicator; we develop three separate indexes drawn from the literature on GVCs to capture these three key aspects of GVC structure:

1. *Farshoring (FARSH)*, as a measure of the geographical distance of production with respect to final demand, i.e. the inverse of nearshoring. We compute this index building on the work of Los et al. (2015) and our own work on nearshoring (Bontadini et al. 2022). For each GVC we compute the share of foreign value added that is supplied from outside the region in which the GVC reaches final demand and the share that is supplied from within the region. We then take the ratio of the two, capturing how important extra regional foreign value added is, with respect to regional value added. In the example of equation 3, assuming that country  $a$  and  $b$  are in the same region, farshoring would amount to  $\frac{v_c b_{ca} f_a}{v_v b_{ba} f_a}$ .
2. *Downstreamness (DOWNSTR)*, as a measure of the length of a GVC. We compute this following Wang et al. (2017) as “the sum along the column of the Leontief inverse matrix, which equals the total value of inputs induced by a unit of final product produced in a particular sector” (p.12). In our example above this is  $b_{ba} + b_{ca}$ . This measure is particularly relevant for the idea that longer GVCs require larger working capital and higher financial costs.
3. *Herfindahl-Hirschman index (HHI)*, as a measure of the concentration of value added supplied by foreign country-industries. This index is computed following Jimenez et al. (2022), and we normalise it to vary between 0 and 10,000, regardless of the length of each GVC. This is intuitively related to the idea of asymmetry of a network highlighted in the literature.

These structural features have been highlighted in the GVC literature as relevant to characterising the way in which production is fragmented across countries. It is difficult to have clear-cut ex ante expectations as to how they might be linked to GVC output growth and shock propagation. We attempt, nonetheless, to flesh out the main mechanisms that are likely to be at play here and discuss key trends in our data in Figures 2 to 4.

Farshoring is inherently linked to the choice firms make about the location of productive activity, which has drawn considerable attention from international business literature. Several factors affect firms’ choice with respect to both original and offshore location features and, crucially, the distance between the two. This latter element is tightly related to

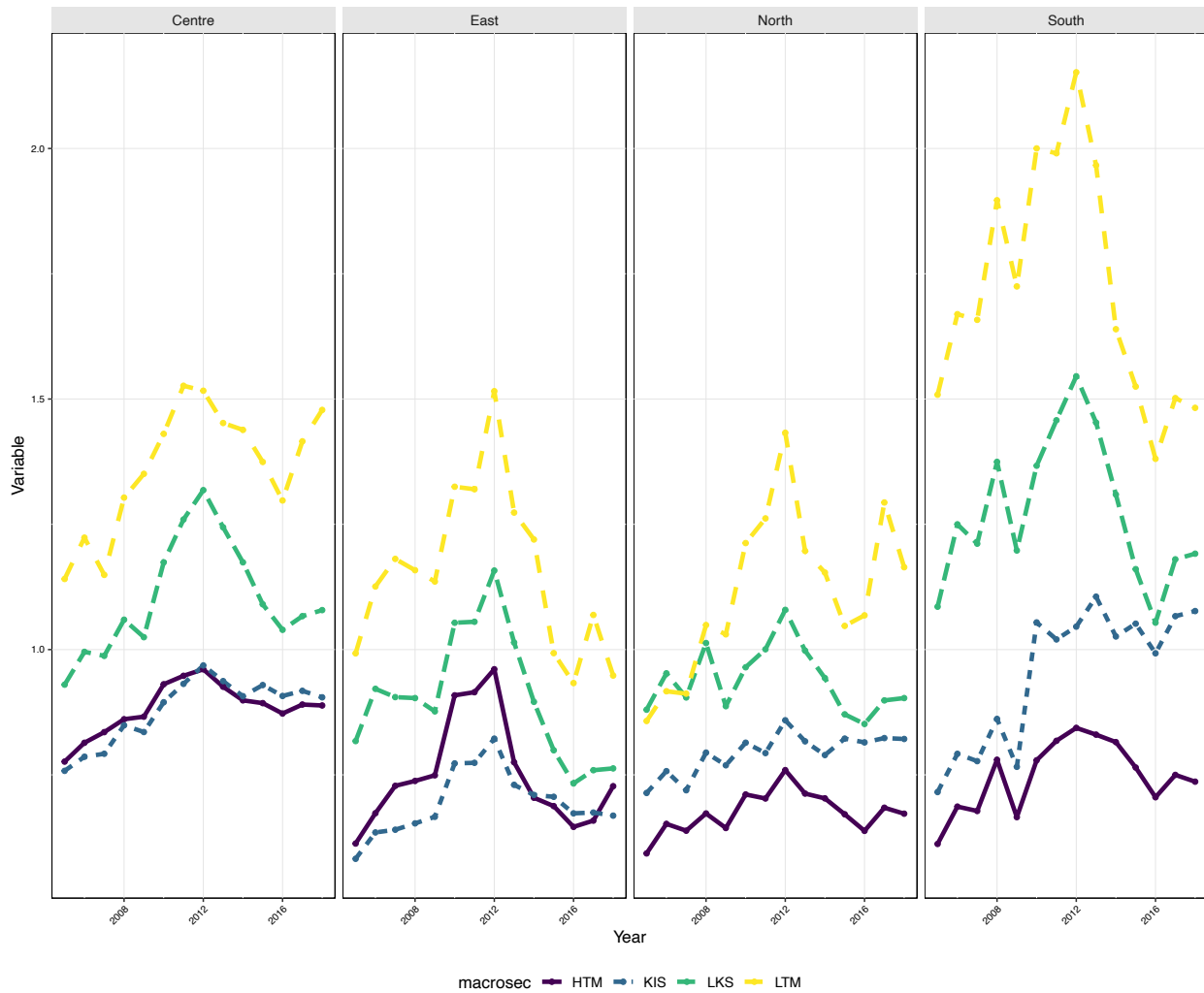
the idea of farshoring. Substantial distance between production and the consumption market can affect production in several ways: (i) the cost of transportation and communication (Pietrobelli and Seri 2023) (ii) the challenges related to coordinating a complex production process (Fratocchi et al. 2014), (iii) hindering supplier-producer interaction, thus reducing innovation and productivity growth (Gray et al. 2017, Pietrobelli and Rabellotti, 2011). In light of this, nearshoring could be a strategy to maximise the benefits of locating production segments in countries with optimal characteristics and at the same time minimising the costs of offshoring production too far (Piantanesi and Arauzo-Carod, 2019).

Figure 2 plots the evolution of average farsharing, across macro sectors and EU regions. Overall, we observe a rather similar trend across all EU regions and macro sectors, with an initial period of strong integration with extra-EU suppliers that has decreased in the aftermath of the global financial crises, especially for the South and East, while the Centre has seen a more modest decrease of its farsharing. Notably, after 2016 farsharing seems to pick up again, although it is hard to gauge whether this is an actual change in trend.

Looking at industries, we also find a pattern similar to what we observe at the country level as well as a rather stable ranking. Low-tech manufacturing has the highest levels of farshoring, driven by the manufacture of coke and refined petroleum products, especially in Southern Europe. Somewhat unexpectedly high-tech manufacturing ranks as the least globally integrated value chains, suggesting that most of the value added in these value chains come from within Europe.

Overall, this evidence is in line with the slowing down of globalisation that has swept across regions and industries, although it does point towards significant heterogeneity. Knowledge intensive services and high-tech manufacturing seem to have been less impacted by this trend, although they also have lower levels of global integration. In contrast, the rest of the continent's economy has experienced a reduction of farshoring, which amounts to nearshoring (as documented in Bontadini et al. 2023).

Figure 2 – Average GVC farshoring across EU macro regions

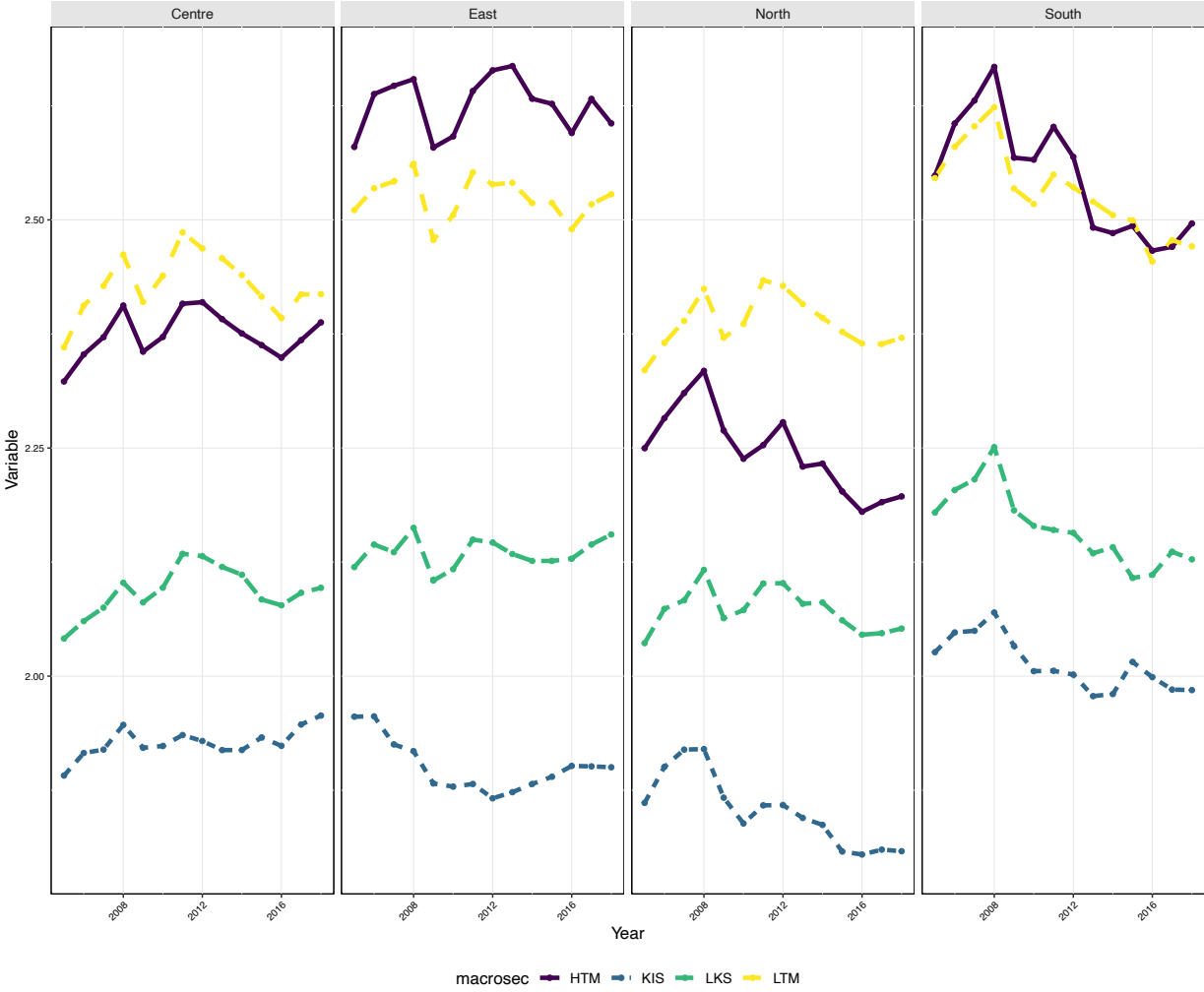


Source: ICIO data. The figure reports the unweighted average of GVC farshoring, across macro sectors and EU regions. Industries are allocated to macro sectors following Eurostat definition: high-tech manufacturging (HTM), knowledge intensive services (KIS), low knowledge intensive services (LKS) and low-tech manufacturing (LTM). EU regions are as follows: Austria, Belgium, France, Germany, France, the UK, and the Netherlands (Centre); Czechia, Estonia, Croatia, Hungary, Poland and Slovakia (East); Denmark, Sweden and Finland (North); and Italy, Spain, Cyprus, Portugal (South).

Concerning the length of European GVCs, i.e. its degree of fragmentation regardless of geographical location, and their relationship to GVC’s final output growth we can hypothesise two contrasting channels. On the one hand, higher fragmentation is likely to lead to higher coordination costs in a fashion similar to what we discussed for farshoring. On the other hand, higher fragmentation can leverage the benefits of the division of labour and of having suppliers specialise in very specific segments of production where they are most

productive, making the whole value chain more efficient. Long GVCs are also, on the one hand, exposed to more potential shocks; on the other hand, such shocks are more likely to dilute along the value chain itself and long GVCs may provide a higher level of diversification among suppliers making them more resilient to supply-side shocks.

Figure 3 – Average GVC length across EU macro regions



Source: ICIO data. The figure reports the unweighted average of GVC length, across macro sectors and EU regions. Industries are allocated to macro sectors following Eurostat definition: high-tech manufacturing (HTM), knowledge intensive services (KIS), low knowledge intensive services (LKS) and low-tech manufacturing (LTM). EU regions are as follows: Austria, Belgium, France, Germany, France, the UK, and the Netherlands (Centre); Czechia, Estonia, Croatia, Hungary, Poland and Slovakia (East); Denmark, Sweden and Finland (North); and Italy, Spain, Cyprus, Portugal (South).



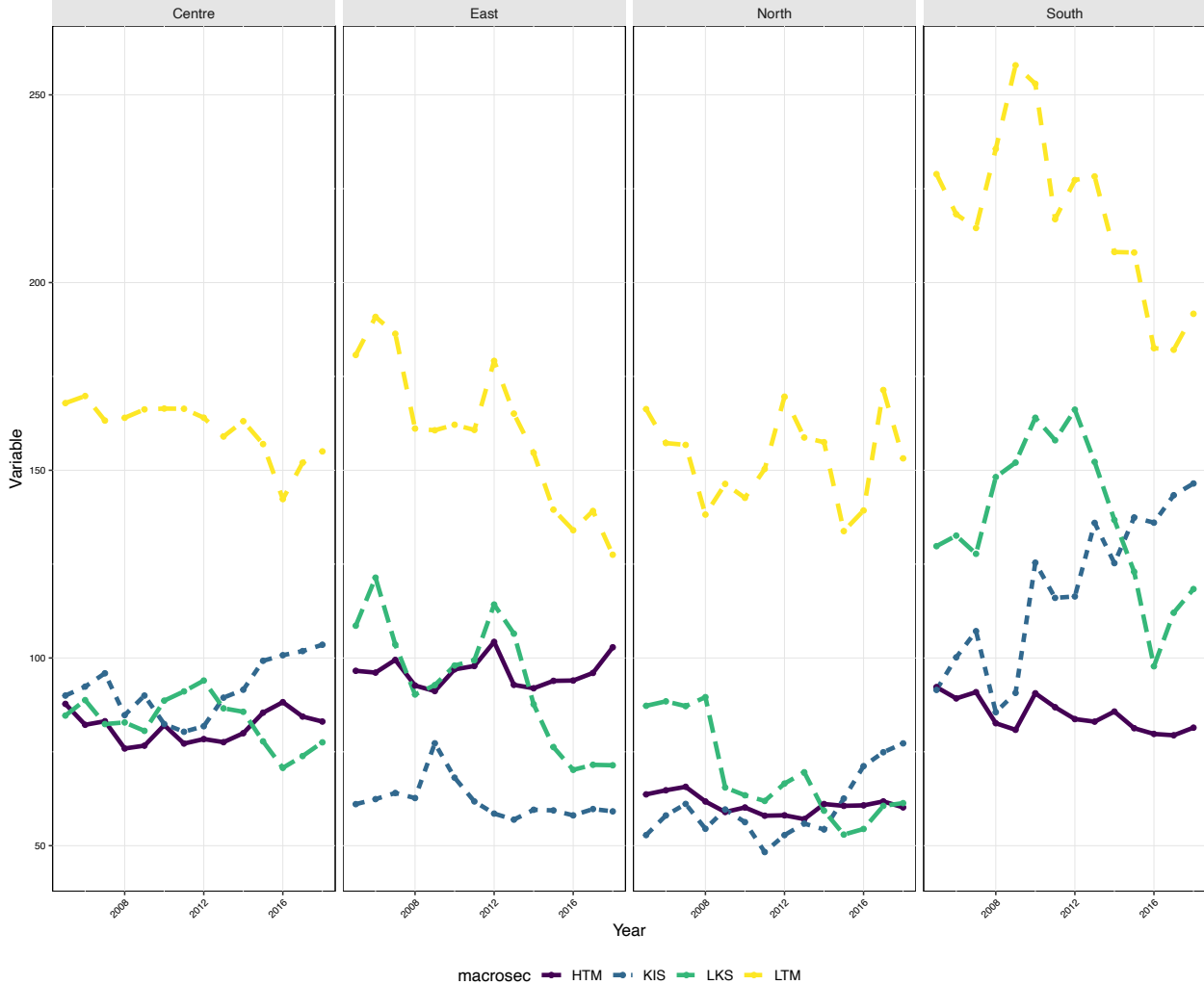
In Figure 3 we can see that the length has significant differences across macro sectors. Manufacturing value chains are by far the most fragmented, while KIS value chains are the shortest ones. All in all, the pattern is rather similar across regions, the global financial crisis has led to a shortening of value chains that have then plateaued. Eastern and Southern Europe both have longer manufacturing GVCs and in both regions high-tech manufacturing is more fragmented than low-tech manufacturing, although in Southern Europe there is a clearly decreasing trend.

Finally, concentration along the value chain can also have an ambiguous relationship with output growth. On the one hand, it would be intuitive to consider that concentration is indicative of a lack of competition among suppliers that lowers GVC efficiency and final output growth. On the other hand, concentration of value added sourcing is a feature of value chains that are intensive in geographically concentrated natural resources or of intermediate products in which economies of scale play a significant role and whose production becomes more efficient when concentrated. When thinking of the implications of concentration for shock propagation, it would also be intuitive to think that more concentrated value chains would suffer more from shocks. However, it is also possible that when a value chain is dominated by large suppliers, other actors will perform relationship specific investment prioritising these relationships and absorbing the shock. For example, Miroudot (2020) argues that, instead, concentration itself may not hamper GVC resilience. He puts forward that concentrated GVCs can in fact rely on large MNEs acting as “control towers” managing risks, and he concludes that “...single sourcing and a long-term relationship with a single supplier is a strategy often observed for improving supply-chain resilience” (Miroudot, 2020, p.124).

Looking at Figure 4, we find again rather stark differences across macro sectors. Low-tech manufacturing has by far the most concentrated value chains, due to the strong dependence on natural resources of the manufacture of coke and refined petroleum products. We also observe a quick decrease, especially in Southern and Eastern Europe from 2012 onwards, roughly at the same time where we observed a significant reduction of the farshoring. This is partly due to natural commodity supercycle, as discussed in Bontadini et al. (2023), and

the decrease in natural resource prices that are primarily sourced from outside Europe and drive as a result a decrease in the share of value added that non-EU countries supply to the continent’s GVCs. Remarkably, knowledge intensive services have experienced an increase in concentration of their GVCs, across all regions except Eastern Europe, which parallels the rise in farsharing observed in Figure 2.

Figure 4 – Average GVC HHIB across EU macro regions



Source: ICIO data. The figure reports the unweighted average of GVC Herfindhal-Hirschman backward index (HHIB) across macro sectors and EU regions. Industries are allocated to macro sectors following Eurostat definition: high-tech manufacturgin (HTM), knowledge intensive services (KIS). low knowledge intensive services (LKS) and low-tech manufacturing (LTM). EU regions are as follows: Austria, Belgium, France, Germany, France, the UK, and the Netherlands (Centre); Czechia, Estonia, Croatia, Hungary, Poland and Slovakia (East); Denmark, Sweden and Finland (North); and Italy, Spain, Cyprus, Portugal (South).

#### 4. Econometric results

For our econometric analysis we focus on the subset of 19 EU countries and industries in the market sector.<sup>2</sup> In order to maximise the number of countries covered in the World Bank data on producer price indexes we also focus on the period 2005-2018. We build on the empirical approaches in Joya and Rougier (2019) and Acemoglu et al. (2016) to obtain our two baseline specifications. First:

$$\begin{aligned} & d\ln(FINO_{j,t}) \\ &= \alpha_{j,t} + \gamma d\ln(FINO_{j,t-1}) + \beta_1 S_{j,t} + \beta_2 DVAS_{j,t-1} + \beta_3 S_{j,t} * DVAS_{j,t-1} + \varphi_{ij} + \tau_t \\ &+ \varepsilon_{j,t} \end{aligned} \tag{6}$$

$FINO_{j,t}$  is the growth rate of each European GVC's final output, which we have deflated using gross output deflators from EUKLEMS-INTANProd data. We test this model in an autoregressive framework, following Acemoglu et al. (2016) and include as regressors our proxy for supply-side shock  $S_{j,t}$ , the share of domestic value added in each GVC  $j$ ,  $DVAS_{j,t-1}$ , and the interaction of these two terms. This model allows us to explore our first research question concerning the relationship between GVC participation and shock propagations. If our interaction term  $\beta_3$  has a negative sign, this would suggest that as GVCs increase the share of value added they source from abroad, they are more exposed to foreign shocks and this amplifies the negative effect of price volatility.

The second key issue of interest to us is the role the structure of GVCs plays in propagating supply shocks. To explore this, we modify our specification above as follows:

---

<sup>2</sup> As a result, we exclude from our analysis services such as public administration, defence, health, education and real estate, as well as arts, recreation and other services. These industries have minimal international fragmentation and would risk biasing our results.

$$\begin{aligned}
dln(FINO_{j,t}) = & \alpha_{j,t} + \gamma dln(FINO_{j,t-1}) + \beta_1 S_{j,t} + \beta_2 FARSH_{j,t-1} + \beta_3 S_{j,t} * FARSH_{j,t-1} \\
& + \beta_4 LENGTH_{j,t-1} + \beta_5 S_{j,t} * LENGTH_{j,t-1} + \beta_6 HHI_{j,t-1} + \beta_7 S_{j,t} * HHI_{j,t-1} \\
& + \beta_8 DVAS_{j,t} + \varphi_{ij} + \tau_t \\
& + \varepsilon_{j,t}
\end{aligned} \tag{7}$$

We augment equation (6) with our three variables capturing the GVCs' structure. We can test the association between GVC structural features, notably how global a GVC is (*FARSH*), its length (*LENGTH*) and concentration (*HHI*), and the growth of its final output. In this specification, the interaction terms inform us of how these GVC structural features mediate supply-side shocks. In both specifications we include both the lag of the outcome variable and country-industry fixed effects ( $\varphi_{ij}$ ), which is likely to make our estimates biased, due to the Nickell bias (Nickell, 1981). To mitigate this we also test two additional specifications: (i) instead of controlling for country-industry fixed effects, we include country and industry dummies separately along with the pre-sample mean of the outcome variable (computed over the period 1995-2004) in line with Blundell et al. (1995; 2002); (ii) we also test our model with a system GMM that treats all regressors as endogenous, instrumenting with past lags. Results for these two approaches are reported in the appendix. Finally, we cluster our standard errors at country level and include time dummies ( $\tau_t$ ) to account for year fixed effects.

We now present empirical evidence providing answers to our two research questions. Table 1 presents OLS results for our first specification, exploring the role of GVCs' foreign share of value added and its interaction with supply-side shocks. The first four columns report our results looking at all industries, at manufacturing alone and at high- and low-tech manufacturing industries, respectively.<sup>3</sup> The second four columns include the interaction term between GVC participation and the shock itself.

---

<sup>3</sup> We allocate manufacturing industries to either the high- or low-tech category following Eurostat's classification: [https://ec.europa.eu/eurostat/statistics-explained/index.php?title=Glossary:High-tech\\_classification\\_of\\_manufacturing\\_industries](https://ec.europa.eu/eurostat/statistics-explained/index.php?title=Glossary:High-tech_classification_of_manufacturing_industries)

As expected, supply-side shocks are negatively associated with GVC final output growth. We also find that, on average, value chains that are less internationalised, i.e. with larger shares of value added being sourced from within the country of completion (DVAS), grow slower. Furthermore, when shocks on the supply side hit these chains, their output grows even slower, as we can see from the negative coefficient for our interaction term. Overall, this seems to be consistent with the notion that integration with foreign suppliers has a positive relationship with output growth, which is in line with the broad literature on exports and economic growth. It has indeed been argued that GVCs offer countries the opportunity to link up with higher quality inputs, to have access to foreign technology and to focus on segments of production in which they have a clear comparative advantage. The fact that GVCs with a higher foreign share of value added appear to be resilient to supply-side shocks also suggests that engaging with the global economy gives producers the possibility to diversify across suppliers and to minimise the shocks' repercussions (Borin et al. 2022).

Table 1 – GVC participation and supply-side shocks

	(1)	(2)	(3)	(4)	(5)	(6)	(7)	(8)
Supply shock	-0.0259** (0.0120)	-0.0270** (0.0122)	-0.0269* (0.0148)	-0.0283** (0.0128)	-0.0537*** (0.0109)	-0.0789*** (0.0222)	-0.0972*** (0.0291)	-0.0673*** (0.0229)
Domestic value added share (log)	-0.211** (0.0909)	-0.0578* (0.0323)	0.0333 (0.0677)	-0.107*** (0.0365)	-0.181* (0.0884)	-0.0225 (0.0386)	0.0542 (0.0669)	-0.0705 (0.0413)
GVC final output growth (t-1)	-0.263*** (0.0728)	-0.181*** (0.0350)	-0.181*** (0.0372)	-0.178*** (0.0370)	-0.263*** (0.0732)	-0.181*** (0.0360)	-0.182*** (0.0375)	-0.177*** (0.0378)
Supply shock * DVAS (log)					-0.0957*** (0.0310)	-0.123** (0.0454)	-0.163** (0.0698)	-0.0944** (0.0401)
Constant	-0.0527 (0.0309)	-0.00887 (0.0152)	0.0460 (0.0320)	-0.0387** (0.0169)	-0.0448 (0.0300)	0.00371 (0.0175)	0.0545 (0.0318)	-0.0266 (0.0187)
Observations	9,264	4,173	1,703	2,470	9,264	4,173	1,703	2,470
R-squared	0.245	0.324	0.311	0.341	0.246	0.328	0.314	0.343
Country-industry FE	Yes	Yes	Yes	Yes	Yes	Yes	Yes	Yes
Year FE	Yes	Yes	Yes	Yes	Yes	Yes	Yes	Yes
Industry	All	Manuf.	HTM	LTM	All	Manuf.	HTM	LTM
S.E. clustered	Country	Country	Country	Country	Country	Country	Country	Country

Source: authors own elaboration using ICIO data and World Bank global database on inflation and EUKLEMS-INTANProd data. HTM and LTM stand for high-tech and low-tech manufacturing, respectively. Robust standard errors in parentheses \*\*\* p<0.01, \*\* p<0.05, \* p<0.1

The results above provide an answer to our first research question concerning GVC participation and shock propagation. GVCs are, however, not all the same: there are specific structural features that are likely to mediate how shocks propagate along GVCs. In Table 2, where we focus on this aspect in particular, as in the previous table, the supply-side shock consistently shows a negative association with GVC output growth and so does the domestic value added share. As in Table 1, we first look at the relationship between GVC structure and final output growth across all industries, manufacturing and high- and low-tech manufacturing. We then look at how each of these three structural features interact with supply shocks. Out of the three structural features we explore, we find length and farshoring to have a negative and statistically significant association with GVC final output growth.

Controlling for a GVC's integration in the global economy, longer GVCs and those that source a larger share of value added from outside their region of completion tend to grow at a slower pace. There appears to be some tension between integration within the global economy, with Table 1 reporting a positive association between GVC final output growth and the share of foreign value added, and the structural features of GVCs themselves. This can be related to the coordination costs of production processes, which are highly fragmented (large length) over very distant geographical areas (farshoring). It would seem that GVCs that do not stretch too thin by fragmenting production across a vast number of stages dispersed across the world are best positioned to grow the fastest.

When we turn to the interaction terms, we find an interesting positive and statistical coefficient for the interaction between the supply shock and the length of the GVC. It appears that longer GVCs are better equipped to withstand supply-side shocks. This is likely due to the diversification effect: longer GVCs may rely less on key suppliers and can therefore smooth out supply shocks by diverting their intermediate demand towards alternative suppliers. As a speculation, it is also worth mentioning that such GVCs are also likely to be dominated by large multinational firms that can shift resources within their internal network to better endure localised shocks.

This presents further tension concerning the relationship between the length of a GVC and its final output growth. GVC length per se is associated with slower growth, but at the same time it seems to attenuate the propagation of shocks. These results seem to apply to the manufacturing industry and to the low-tech sectors in particular. This makes sense, intuitively, as trade relationships in these industries are often more at arm's length or dominated by powerful suppliers that can interrupt them easily and are unlikely to have performed a large amount of relationship investment (Gereffi et al, 2005). Furthermore, low-tech products often compete on price and large scales rather than on quality and technology. Such GVCs are therefore more likely to be exposed to price instability.

The results are overall robust also when testing our two alternative specifications, which are available upon request. When using the PSM to control for GVC time-invariant features, we find results for the structure of GVCs to be very similar to our OLS results. Concerning the

relationship between the foreign value added share of a GVC and the propagation of shocks, we also find consistent results. While our estimates remain stable for the manufacturing industry as a whole, they do lose precision as we break down the manufacturing industry.

Finally, our GMM results show that the share of domestic value added by itself loses significance, but its interaction with the price instability shock remains negative and significant. This confirms that while GVCs with a larger foreign value added share may not grow slower, they are more exposed to foreign price instability shocks. When turning to the role of the GVC structure we find less stable results, although the main effects for manufacturing and high-tech manufacturing GVCs are confirmed.



Table 2 – GVC structure and supply-side shocks

	(1)	(2)	(3)	(4)	(5)	(6)	(7)	(8)
Farshoring, (log t-1)	-0.0542** (0.0203)	-0.0609** (0.0226)	-0.120** (0.0427)	-0.0192 (0.0163)	-0.0500** (0.0190)	-0.0623*** (0.0215)	-0.128*** (0.0430)	-0.0178 (0.0184)
Length (log t-1)	<b>-0.381**</b> <b>(0.170)</b>	<b>-0.295***</b> <b>(0.0957)</b>	<b>-0.284</b> <b>(0.171)</b>	<b>-0.283**</b> <b>(0.123)</b>	<b>-0.382**</b> <b>(0.169)</b>	<b>-0.351***</b> <b>(0.0994)</b>	<b>-0.289</b> <b>(0.168)</b>	<b>-0.384**</b> <b>(0.146)</b>
HHIB (log t-1)	-0.0154 (0.0139)	0.0272 (0.0292)	0.0503 (0.0558)	0.00297 (0.0186)	-0.0196 (0.0140)	0.0275 (0.0277)	0.0470 (0.0522)	0.00176 (0.0170)
Supply shock	<b>-0.0273**</b> <b>(0.0113)</b>	<b>-0.0295**</b> <b>(0.0121)</b>	<b>-0.0296**</b> <b>(0.0140)</b>	<b>-0.0306**</b> <b>(0.0133)</b>	<b>-0.0959</b> <b>(0.0616)</b>	<b>-0.243**</b> <b>(0.0859)</b>	<b>-0.329***</b> <b>(0.103)</b>	<b>-0.346**</b> <b>(0.129)</b>
Supply shock * Farsh. (log t-1)					-0.0190 (0.0132)	0.00380 (0.0143)	0.0516 (0.0326)	-0.00310 (0.0185)
Supply shock * Len. (log t-1)					<b>0.00402</b> <b>(0.0660)</b>	<b>0.219***</b> <b>(0.0753)</b>	<b>0.0686</b> <b>(0.0775)</b>	<b>0.343***</b> <b>(0.104)</b>
Supply shock * HHIB (log t-1)					0.0147* (0.00736)	0.00459 (0.00957)	0.0604* (0.0298)	0.00178 (0.0112)
Domestic value added share (log) (DVAS)	-0.346** (0.132)	-0.107** (0.0470)	-0.0488 (0.120)	-0.133** (0.0475)	-0.346** (0.132)	-0.107** (0.0488)	-0.0589 (0.115)	-0.125** (0.0472)
GVC final output growth (t-1)	-0.261*** (0.0719)	-0.182*** (0.0363)	-0.187*** (0.0369)	-0.176*** (0.0366)	-0.261*** (0.0720)	-0.183*** (0.0370)	-0.191*** (0.0370)	-0.176*** (0.0383)
Constant	0.266* (0.153)	0.103 (0.160)	0.00850 (0.320)	0.190* (0.109)	0.285* (0.153)	0.151 (0.144)	0.0205 (0.309)	0.290** (0.116)
Observations	9,264	4,173	1,703	2,470	9,264	4,173	1,703	2,470
R-squared	0.252	0.328	0.318	0.342	0.252	0.331	0.323	0.347
Country-industry FE	Yes	Yes	Yes	Yes	Yes	Yes	Yes	Yes
Year FE	Yes	Yes	Yes	Yes	Yes	Yes	Yes	Yes
Industry	All	Manuf.	HTM	LTM	All	Manuf.	HTM	LTM
S.E. clustered	Country	Country	Country	Country	Country	Country	Country	Country

Source: authors own elaboration using ICIO data and World Bank global database on inflation and EUKLEMS-INTANProd data. HTM and LTM stand for high-tech and low-tech manufacturing, respectively. Robust standard errors in parentheses \*\*\* p<0.01, \*\* p<0.05, \* p<0.1

## 5. Conclusions

This paper has delved into two key issues that in the past few years have come to the forefront of the policy debate on globalisation. In fact, new questions have emerged on the future and the nature of GVCs as we enter a more turbulent geopolitical era in which the international fragmentation of production can become a channel for economic instability.

In this paper we have looked at European GVCs over the period 2005-18 and studied the relationship between final output growth and not only the GVCs' degree of foreign integration, but also their structural features. We have further advanced our analysis by looking specifically at how shock propagates through these two aspects. Overall we have found rather nuanced results, fraught with trade-offs.

On the one hand, GVC integration with foreign suppliers is associated with faster output growth and also seems to attenuate the propagation of shocks. On the other hand, we identify salient structural features – notably the length, i.e. the degree of fragmentation – of GVCs that have ambivalent results themselves. Longer GVCs tend to grow slower, but at the same time they appear to be less associated with price instability shocks.

It appears, therefore, that there is no clear-cut answer as to whether GVC participation is a conduit for shock propagation. Participation in GVCs is associated overall with faster output growth and less shock propagation. However, GVCs vary widely across industries and countries in their structural features, in terms of where they source their value added, through how many steps they do so and how concentrated their suppliers are.

As the EU, along with many other major economies, embarks in a new debate on globalisation and the location of production stages, it appears paramount to be nimble and flexible in the policy approach, taking into account the structural features of GVCs, rather than simply the measures of intensity of GVC participation.

The evidence put forward in this paper clearly makes this contribution and paves the way for further research on several fronts. On the one hand, macro-level evidence on GVCs should be complemented with product- and firm- level analysis in order to fully assess the specific

structures of GVCs, which will likely require both quantitative and qualitative analysis. On the other hand, it is important to bear in mind that our analysis relies on data from a relatively calm period where price instability was relatively modest and largely driven by natural resource cycles. As more data becomes available for more recent years, new research should focus on the most recent and most turbulent period to further investigate the issues we have tackled in this contribution.

## References

Acemoglu, D., Akcigit, U., & Kerr, W. (2016). Networks and the macroeconomy: An empirical exploration. *NBER macroeconomics annual*, 30(1), 273-335.

Altzinger, W., Landesmann, M. A. (2008) Special issue: relocation of production and jobs to Central and Eastern Europe – who gains and who loses? *Structural Change and Economic Dynamics*, 19(1), 1–3.

Antras, P., Chor, D., Fally, T., & Hillberry, R. (2012, January). Measuring upstreamness of production and trade. In *American Economic Review Papers and Proceedings* (Vol. 112, No. 3, pp. 552-580).

Antràs, P., & Chor, D. (2018). On the measurement of upstreamness and downstreamness in global value chains. *World Trade Evolution: Growth, Productivity and Employment*, 5, 126-194.

Auer, R. A., Levchenko, A. A., & Sauré, P. (2019). International inflation spillovers through input linkages. *Review of Economics and Statistics*, 101(3), 507-521.

Baldwin, R. (2013). Trade and industrialization after globalization's second unbundling: How building and joining a supply chain are different and why it matters. In *Globalization in an age of crisis: Multilateral economic cooperation in the twenty-first century* (pp. 165-212). University of Chicago Press.

Baldwin, R., & Freeman, R. (2022). Risks and global supply chains: What we know and what we need to know. *Annual Review of Economics*, 14, 153-180.

Baldwin, R, Freeman R., and Theodorakopoulos A.. Horses for courses: measuring foreign supply chain exposure. NBER w30525. National Bureau of Economic Research, 2022.

Baqae, D. R., & Farhi, E. (2020). Productivity and misallocation in general equilibrium. *The Quarterly Journal of Economics*, 135(1), 105-163.

Baqae, D. R., & Farhi, E. (2019). The macroeconomic impact of microeconomic shocks: Beyond Hulten's theorem. *Econometrica*, 87(4), 1155-1203.

Barbieri, P., Boffelli, A., Elia, S., Fratocchi, L., Kalchschmidt, M., & Samson, D. (2020). What can we learn about reshoring after Covid-19?. *Operations Management Research*, 13, 131-136.

Blundell, R., Griffith, R., & van Reenen, J. (1995) Dynamic Count Data Model of technological Innovation. *The Economic Journal*, 105(429), 333-344.

Blundell, R., Griffith, R., & Windmeijer, F. (2002) Individual Effects and Dynamics in Count Data Models. *Journal of Econometrics*, 108, 113-131.

Boehm, C. E., Flaaen, A., & Pandalai-Nayar, N. (2019). Input linkages and the transmission of shocks: Firm-level evidence from the 2011 Tōhoku earthquake. *Review of Economics and Statistics*, 101(1), 60-75.

Bontadini, F., Evangelista, R., Meliciani, V., & Savona, M. (2022). Patterns of integration in global value chains and the changing structure of employment in Europe. *Industrial and Corporate Change*, 31(3), 811-837.

Bontadini F., Meliciani V., Savona M., Wirkierman A., (2022) Nearshoring and Farsharing in Europe within the Global Economy. *CESifo EconPol Forum* 23 (5), 37-42

Borin, A., Mancini, M., & Taglioni, D. (2021). Measuring exposure to risk in global value chains.

Bramucci, A., Cirillo, V., Evangelista, R., & Guarascio, D. (2021). Offshoring, industry heterogeneity and employment. *Structural change and economic dynamics*, 56, 400-411.

Carvalho, V. M., Nirei, M., Saito, Y. U., & Tahbaz-Salehi, A. (2021). Supply chain disruptions: Evidence from the great east japan earthquake. *The Quarterly Journal of Economics*, 136(2), 1255-1321.

Carvalho, V. M., & Tahbaz-Salehi, A. (2019). Production networks: A primer. *Annual Review of Economics*, 11, 635-663.

Di Giovanni, J. D., & Levchenko, A. A. (2009). Trade openness and volatility. *The Review of Economics and Statistics*, 91(3), 558-585.

Fratocchi, L., Di Mauro, C., Barbieri, P., Nassimbeni, G., & Zanoni, A. (2014). When manufacturing moves back: Concepts and questions. *Journal of Purchasing and Supply Management*, 20(1), 54-59.

Gray, J. V., Esenduran, G., Rungtusanatham, M. J., & Skowronski, K. (2017). Why in the world did they reshore? Examining small to medium-sized manufacturer decisions. *Journal of Operations Management*, 49, 37-51.

Ha, J., Kose, M. A., & Ohnsorge, F. (2023). One-stop source: A global database of inflation. *Journal of International Money and Finance*, 102896.

Koopman, R., Wang, Z., & Wei, S. J. (2014). Tracing value-added and double counting in gross exports. *American economic review*, 104(2), 459-494.

Javorcik, B. (2020). Global supply chains will not be the same in the post-COVID-19 world. *COVID-19 and trade policy: Why turning inward won't work*, 111, 111-116.

Johnson, R. C., & Noguera, G. (2012). Accounting for intermediates: Production sharing and trade in value added. *Journal of international Economics*, 86(2), 224-236.

Johnson, R. and G. Noguera (2017), "A Portrait of Trade in Value-Added over Four Decades", *The Review of Economics and Statistics*, Vol. 99/5, pp. 896-911.

Jiménez, S., Dietzenbacher, E., Duarte, R., & Sánchez-Chóliz, J. (2022). The geographical and sectoral concentration of global supply chains. *Spatial Economic Analysis*, 17(3), 370-394.

Los, B., Timmer, M. P., & De Vries, G. J. (2015). How global are global value chains? A new approach to measure international fragmentation. *Journal of regional science*, 55(1), 66-92.

Miroudot, S. (2020). Resilience versus robustness in global value chains: Some policy implications. *COVID-19 and trade policy: Why turning inward won't work*, 117-130.

Nickell, S. (1981). Biases in dynamic models with fixed effects. *Econometrica: Journal of the econometric society*, 1417-1426.

Pahl, S., & Timmer, M. P. (2020). Do global value chains enhance economic upgrading? A long view. *The journal of development studies*, 56(9), 1683-1705.

Pasinetti, L. L. (1973). The notion of vertical integration in economic analysis, *Metroeconomica*, XXV, reprinted in Pasinetti, LL (ed.), *Essays on the Theory of Joint Production*, 1980.

Piatanesi, Benedetta, and Josep-Maria Arauzo-Carod. "Backshoring and nearshoring: An overview." *Growth and Change* 50, no. 3 (2019): 806-823.

Pietrobelli, C., & Rabellotti, R. (2011). Global value chains meet innovation systems: are there learning opportunities for developing countries?. *World development*, 39(7), 1261-1269.

Pietrobelli, C., & Seri, C. (2023). Reshoring, nearshoring and development. Readiness and implications for Latin America and the Caribbean. *Transnational Corporations*, 30(2), 37-70.

Schwellnus, C., Haramboure, A., Samek, L., Pechansky, R. C., & Cadestin, C. (2023). Global value chain dependencies under the magnifying glass.

OECD SCIENCE, TECHNOLOGY AND INDUSTRY POLICY PAPERS March 2023 No. 142

Taglioni, D., & Winkler, D. (2016). *Making global value chains work for development*. Washington, DC: The World Bank

Simonazzi, A., Ginzburg, A., Nocella, G. (2013) Economic relations between Germany and Southern Europe. *Cambridge Journal of Economics*, 37(3), 653-675.

## Appendix

ISIC.code	Industry.code
D01T02	Natural resources (NTR)
D03	Natural resources (NTR)
D05T06	Natural resources (NTR)
D07T08	Natural resources (NTR)
D09	Natural resources (NTR)
D10T12	Low-tech manufacturing (LTM)
D13T15	Low-tech manufacturing (LTM)
D16	Low-tech manufacturing (LTM)
D17T18	Low-tech manufacturing (LTM)
D19	Low-tech manufacturing (LTM)
D20	High-tech manufacturing (HTM)
D21	High-tech manufacturing (HTM)
D22	Low-tech manufacturing (LTM)
D23	Low-tech manufacturing (LTM)
D24	Low-tech manufacturing (LTM)
D25	Low-tech manufacturing (LTM)
D26	High-tech manufacturing (HTM)
D27	High-tech manufacturing (HTM)
D28	High-tech manufacturing (HTM)
D29	High-tech manufacturing (HTM)
D30	High-tech manufacturing (HTM)
D31T33	Low-tech manufacturing (LTM)
D35	Low knowledge intensive services (LKS)
D36T39	Low knowledge intensive services (LKS)
D41T43	Low knowledge intensive services (LKS)
D45T47	Low knowledge intensive services (LKS)
D49	Low knowledge intensive services (LKS)
D50	Low knowledge intensive services (LKS)
D51	Low knowledge intensive services (LKS)
D52	Low knowledge intensive services (LKS)
D53	Low knowledge intensive services (LKS)
D55T56	Low knowledge intensive services (LKS)
D58T60	Knowledge intensive business services (KIS)



D61	Low knowledge intensive services (LKS)
D62T63	Knowledge intensive business services (KIS)
D64T66	Knowledge intensive business services (KIS)
D68	Low knowledge intensive services (LKS)
D69T75	Knowledge intensive business services (KIS)
D77T82	Low knowledge intensive services (LKS)
D84	Low knowledge intensive services (LKS)
D85	Low knowledge intensive services (LKS)
D86T88	Low knowledge intensive services (LKS)
D90T93	Low knowledge intensive services (LKS)

Below we replicate the main results, with two different, more demanding, econometric approaches. First, we test our main model replacing country-industry fixed effects with the pre-sample mean (PSM) of the outcome variable, computed over the period 1995-2004. This has the advantage of not being correlated with the lag of outcome variable, overcoming the threat posed by the Nickell bias, and on the other hand it still reasonably absorbs long-term, pre-existing and time-invariant features of country-industries concerning each country-industry. Overall our results remain quite stable in both Table A1 and A2.

Table A1 – GVC participation and supply side shocks, PSM results.

	(1)	(2)	(3)	(4)	(5)	(6)	(7)	(8)
Supply shock	<b>-0.0282**</b> (0.0110)	<b>-0.0257**</b> (0.0112)	<b>-0.0277*</b> (0.0141)	<b>-0.0292**</b> (0.0108)	<b>-0.0487***</b> (0.00969)	<b>-0.0643***</b> (0.0192)	<b>-0.0812**</b> (0.0284)	<b>-0.0573**</b> (0.0216)
Domestic value added share (log)	<b>-0.0819**</b> (0.0306)	<b>-0.0571***</b> (0.0178)	<b>-0.00992</b> (0.0376)	<b>-0.0714***</b> (0.0211)	<b>-0.0573*</b> (0.0276)	<b>-0.0274</b> (0.0228)	<b>0.00717</b> (0.0381)	<b>-0.0395</b> (0.0368)
GVC final output growth (t-1)	-0.245*** (0.0625)	-0.140*** (0.0381)	-0.141*** (0.0397)	-0.151*** (0.0450)	-0.245*** (0.0628)	-0.139*** (0.0392)	-0.142*** (0.0405)	-0.150*** (0.0457)
PSM GVC final output growth (log)	0.0227 (0.0768)	0.270** (0.116)	0.356** (0.167)	0.214** (0.0796)	0.0312 (0.0790)	0.287** (0.118)	0.369** (0.172)	0.215** (0.0807)
Supply shock * DVAS (log)					<b>-0.0683**</b> (0.0277)	<b>-0.0845**</b> (0.0337)	<b>-0.126*</b> (0.0696)	<b>-0.0621</b> (0.0379)
Constant	-0.00973	-0.0164	0.00877	-0.0256**	-0.00336	-0.00517	0.0151	-0.0135

	(0.0117)	(0.0107)	(0.0174)	(0.0103)	(0.0104)	(0.0117)	(0.0183)	(0.0157)
Observations	9,251	4,173	1,703	2,470	9,251	4,173	1,703	2,470
R-squared	0.218	0.288	0.273	0.318	0.219	0.290	0.275	0.320
Country-industry FE	Yes	Yes	Yes	Yes	Yes	Yes	Yes	Yes
Year FE	Yes	Yes	Yes	Yes	Yes	Yes	Yes	Yes
Industry	All	Manuf.	HTM	LTM	All	Manuf.	HTM	LTM
S.E. clustered	Country	Country	Country	Country	Country	Country	Country	Country

Source: authors own elaboration using ICIO data and World Bank global database on inflation and EUKLEMS-INTANProd data. HTM and LTM stand for high-tech and low-tech manufacturing, respectively. Robust standard errors in parentheses \*\*\* p<0.01, \*\* p<0.05, \* p<0.1

Table 2A – GVC structure and supply side shocks, PSM results

	(1)	(2)	(3)	(4)	(5)	(6)	(7)	(8)
Farshoring, (log t-1)	-0.0220** (0.00897)	-0.0110 (0.00747)	-0.0620** (0.0242)	0.00601 (0.00691)	-0.0180** (0.00849)	-0.0122 (0.0101)	-0.0701** (0.0259)	0.00937 (0.0124)
Length (log t-1)	<b>-0.208***</b> <b>(0.0606)</b>	<b>-0.180***</b> <b>(0.0525)</b>	<b>-0.233*</b> <b>(0.116)</b>	<b>-0.106</b> <b>(0.0807)</b>	<b>-0.211***</b> <b>(0.0581)</b>	<b>-0.205***</b> <b>(0.0596)</b>	<b>-0.242*</b> <b>(0.116)</b>	<b>-0.166*</b> <b>(0.0942)</b>
HHIB (log t-1)	-0.000603 (0.00520)	0.0106 (0.0110)	0.0429 (0.0289)	-0.00165 (0.00678)	-0.00160 (0.00531)	0.00999 (0.00976)	0.0405 (0.0272)	-0.00116 (0.00661)
Supply shock	<b>-0.0278**</b> <b>(0.0106)</b>	<b>-0.0278**</b> <b>(0.0109)</b>	<b>-0.0288**</b> <b>(0.0136)</b>	<b>-0.0315***</b> <b>(0.0109)</b>	<b>-0.0622</b> <b>(0.0507)</b>	<b>-0.179**</b> <b>(0.0778)</b>	<b>-0.295**</b> <b>(0.105)</b>	<b>-0.266**</b> <b>(0.126)</b>
Supply shock * Farsh. (log t-1)					-0.0151 (0.0114)	-0.00309 (0.0134)	0.0344 (0.0299)	-0.00862 (0.0193)
Supply shock * Len. (log t-1)					<b>0.0168</b> <b>(0.0580)</b>	<b>0.132**</b> <b>(0.0610)</b>	<b>0.0436</b> <b>(0.0741)</b>	<b>0.246**</b> <b>(0.0997)</b>
Supply shock * HHIB (log t-1)					0.00461 (0.00608)	0.00757 (0.00981)	0.0565* (0.0279)	0.00298 (0.0111)
Domestic value added share (log) (DVAS)	-0.177*** (0.0455)	-0.0987*** (0.0236)	-0.0762 (0.0988)	-0.0799*** (0.0231)	-0.178*** (0.0461)	-0.0972*** (0.0241)	-0.0808 (0.0993)	-0.0726*** (0.0242)
GVC final output growth (t-1)	-0.246*** (0.0612)	-0.142*** (0.0392)	-0.149*** (0.0399)	-0.151*** (0.0452)	-0.246*** (0.0614)	-0.141*** (0.0398)	-0.152*** (0.0402)	-0.151*** (0.0465)
PSM GVC final output growth (log)	0.0258 (0.0738)	0.286** (0.114)	0.324** (0.147)	0.237** (0.0845)	0.0269 (0.0764)	0.294** (0.115)	0.324** (0.148)	0.226** (0.0808)
Constant	0.124** (0.0490)	0.0781* (0.0390)	-0.0156 (0.170)	0.0745 (0.0615)	0.131** (0.0489)	0.103** (0.0395)	-0.00196 (0.165)	0.130 (0.0789)
Observations	9,251	4,173	1,703	2,470	9,251	4,173	1,703	2,470
R-squared	0.224	0.291	0.281	0.319	0.224	0.292	0.285	0.322
Country-industry FE	Yes	Yes	Yes	Yes	Yes	Yes	Yes	Yes
Year FE	Yes	Yes	Yes	Yes	Yes	Yes	Yes	Yes
Industry	All	Manuf.	HTM	LTM	All	Manuf.	HTM	LTM
S.E. clustered	Country	Country	Country	Country	Country	Country	Country	Country

Source: authors own elaboration using ICIO data and World Bank global database on inflation and EUKLEMS-INTANProd data. HTM and LTM stand for high-tech and low-tech manufacturing, respectively. Robust standard errors in parentheses \*\*\* p<0.01, \*\* p<0.05, \* p<0.1

We do not have strong theoretical reasons to believe that the structure of a GVC is intrinsically related to its output growth, but we nevertheless enter the GVC structural features with a lag of one year to minimise simultaneity concerns. This is less obvious for the intensity of the price instability shock, which enters the econometric exercise without any lag. It is however worth recalling that the shock is a weighted average of the standard deviation of monthly PPI. It appears unlikely that the final output growth of a single GVC would be strong enough to generate large enough instability in a country that this would be correlated to our supply side shock. To account for this possibility, together with any other concern of simultaneity between GVCs structural features and our outcome variable, we also test our results using a system GMM. In doing, so we are considering that all

variables in our specification are endogenous, and we instrument them with their own lags. Results are overall stable and confirm our initial findings. It is however worth noting that when we break down manufacturing in Table A4, we find that our measure of length and its interaction with the shock is statistically significant for high-tech, rather than low-tech, manufacturing.

Table A3 – GVC participation and supply side shocks, GMM results

	(1)	(2)	(3)	(4)	(5)	(6)	(7)	(8)
Supply shock	<b>-0.0429***</b>	<b>-0.0552**</b>	<b>-0.0200</b>	<b>-0.0424**</b>	<b>-0.136***</b>	<b>-0.213***</b>	<b>-0.167**</b>	<b>-0.234***</b>
	<b>(0.0150)</b>	<b>(0.0245)</b>	<b>(0.0262)</b>	<b>(0.0188)</b>	<b>(0.0356)</b>	<b>(0.0441)</b>	<b>(0.0689)</b>	<b>(0.0653)</b>
Domestic value added share (log)	<b>-1.787*</b>	<b>-0.522</b>	<b>0.545</b>	<b>-0.432**</b>	<b>-2.724</b>	<b>-0.958</b>	<b>0.769</b>	<b>-1.527</b>
	<b>(0.964)</b>	<b>(0.422)</b>	<b>(0.455)</b>	<b>(0.188)</b>	<b>(1.844)</b>	<b>(0.938)</b>	<b>(0.928)</b>	<b>(1.302)</b>
GVC final output growth (t-1)	<b>-0.182***</b>	<b>-0.0853**</b>	<b>-0.177***</b>	<b>-0.0993**</b>	<b>-0.132**</b>	<b>-0.101***</b>	<b>-0.148***</b>	<b>-0.0904**</b>
	<b>(0.0427)</b>	<b>(0.0396)</b>	<b>(0.0400)</b>	<b>(0.0413)</b>	<b>(0.0563)</b>	<b>(0.0379)</b>	<b>(0.0450)</b>	<b>(0.0431)</b>
Supply shock * DVAS (log)					<b>-0.549**</b>	<b>-0.370**</b>	<b>-0.197</b>	<b>-0.722***</b>
					<b>(0.224)</b>	<b>(0.150)</b>	<b>(0.193)</b>	<b>(0.252)</b>
Observations	8,550	3,852	1,572	2,280	8,550	3,852	1,572	2,280
Number of country-industries	713	321	131	190	713	321	131	190
Country-industry FE	Yes	Yes	Yes	Yes	Yes	Yes	Yes	Yes
Year FE	Yes	Yes	Yes	Yes	Yes	Yes	Yes	Yes
Industry	All	Manuf.	HTM	LTM	All	Manuf.	HTM	LTM
S.E. clustered	Country	Country	Country	Country	Country	Country	Country	Country

Source: authors own elaboration using ICIO data and World Bank global database on inflation and EUKLEMS-INTANProd data. HTM and LTM stand for high-tech and low-tech manufacturing, respectively. Robust standard errors in parentheses \*\*\* p<0.01, \*\* p<0.05, \* p<0.1

Table A4 – GVC structure and supply side shocks, GMM results

	(1)	(2)	(3)	(4)	(5)	(6)	(7)	(8)
Farshoring, (log t-1)	0.0343 (0.134)	-0.0258 (0.167)	0.147 (0.245)	-0.0386 (0.185)	0.0146 (0.140)	-0.0250 (0.193)	0.0680 (0.216)	-0.124 (0.213)
Length (log t-1)	<b>-1.725***</b> <b>(0.556)</b>	<b>-0.687</b> <b>(0.612)</b>	<b>-1.353**</b> <b>(0.671)</b>	<b>-1.096</b> <b>(1.002)</b>	<b>-1.747***</b> <b>(0.561)</b>	<b>-0.687</b> <b>(0.602)</b>	<b>-1.624***</b> <b>(0.628)</b>	<b>-0.939</b> <b>(0.940)</b>
HHIB (log t-1)	-0.198** (0.0980)	-0.0952 (0.102)	-0.273 (0.179)	-0.0481 (0.110)	-0.175* (0.1000)	-0.0538 (0.109)	-0.272* (0.152)	-0.00277 (0.112)
Supply shock	<b>-0.0761**</b> <b>(0.0316)</b>	<b>-0.0283</b> <b>(0.0491)</b>	<b>-0.0474</b> <b>(0.0742)</b>	<b>-0.00609</b> <b>(0.0446)</b>	<b>-0.00723</b> <b>(0.352)</b>	<b>-0.608*</b> <b>(0.358)</b>	<b>-1.029**</b> <b>(0.440)</b>	<b>-0.334</b> <b>(0.497)</b>
Supply shock * Farsh. (log t-1)					0.0117 (0.0463)	-0.0178 (0.0262)	0.0129 (0.0570)	0.0183 (0.0302)
Supply shock * Len. (log t-1)					0.0377 (0.115)	<b>0.477*</b> <b>(0.260)</b>	<b>0.485**</b> <b>(0.240)</b>	0.366 (0.409)
Supply shock * HHIB (log t-1)					-0.0217 (0.0613)	0.0306 (0.0306)	0.133* (0.0808)	-0.00156 (0.0299)
Domestic value added share (log) (DVAS)	-0.805** (0.346)	-0.203 (0.219)	-0.729* (0.411)	-0.186 (0.196)	-0.739** (0.354)	-0.161 (0.276)	-0.650* (0.382)	-0.253 (0.253)
GVC final output growth (t-1)	-0.720*** (0.134)	-0.467*** (0.173)	-0.702*** (0.163)	-0.267* (0.149)	-0.736*** (0.138)	-0.481*** (0.155)	-0.691*** (0.161)	-0.274** (0.134)
Observations	8550	3852	1572	2280	8550	3852	1572	2280
Number of country-industries	713	321	131	190	713	321	131	190
Country-industry FE	Yes	Yes	Yes	Yes	Yes	Yes	Yes	Yes
Year FE	Yes	Yes	Yes	Yes	Yes	Yes	Yes	Yes
Industry	All	Manuf.	HTM	LTM	All	Manuf.	HTM	LTM
S.E. clustered	Country	Country	Country	Country	Country	Country	Country	Country

Source: authors own elaboration using ICIO data and World Bank global database on inflation and EUKLEMS-INTANProd data. HTM and LTM stand for high-tech and low-tech manufacturing, respectively. Robust standard errors in parentheses \*\*\* p<0.01, \*\* p<0.05, \* p<0.1

